

Station attendance

Napoli Centrale

Analysis of the presence of people in the station through the processing of Vodafone Analytics (non-personal telephone Big Data, anonymized and aggregated in absolute compliance with the privacy requirements of the GDPR).

Total
4,2 millions

92,0% Italians
8,0% Foreigners

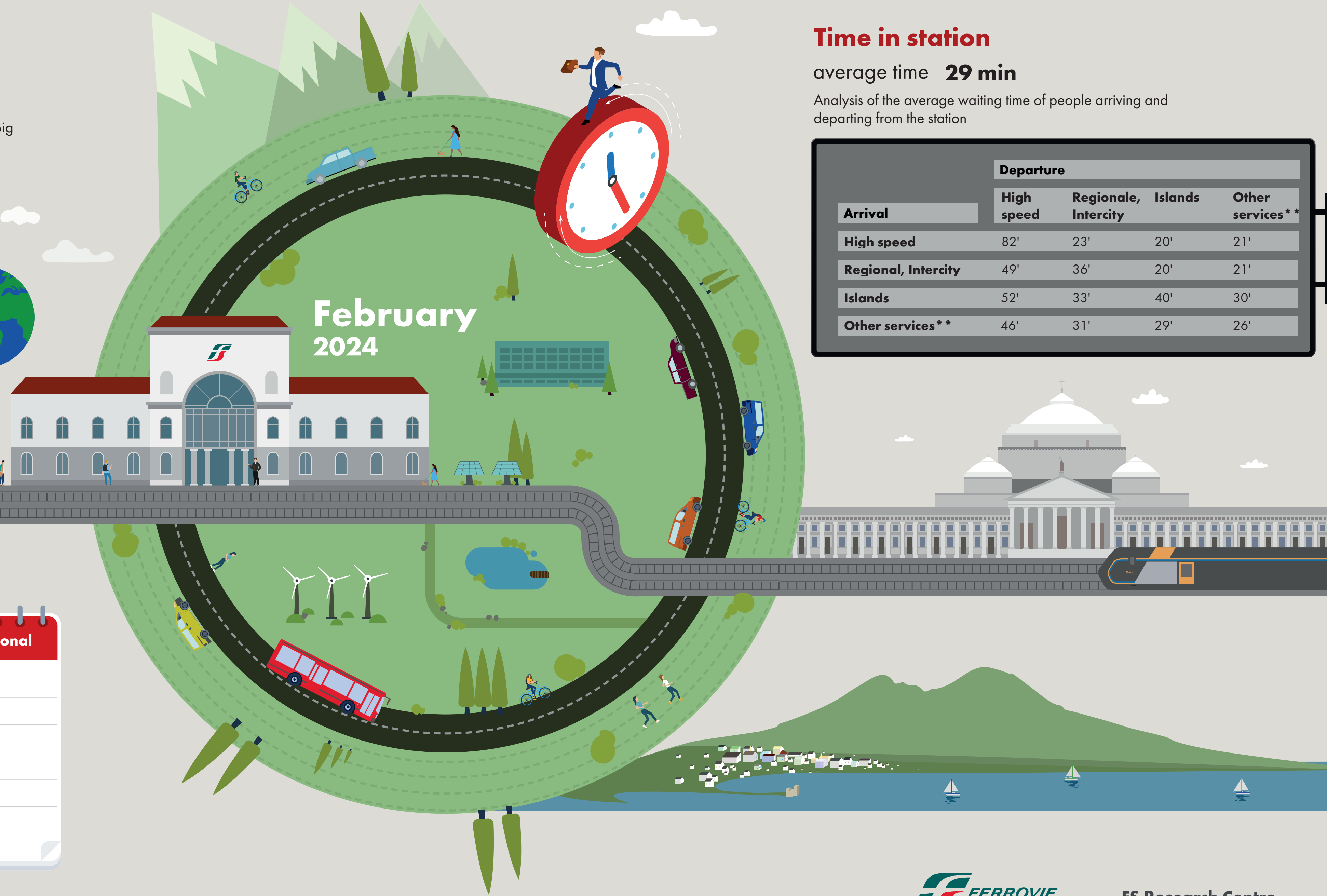
0,4 millions
Number of visitors*
3,8 millions
Passengers

Types of travelers

52% commuters **48%** occasional

	Commuters	Occasional
monday	57%	43%
tuesday	58%	42%
wednesday	57%	43%
thursday	58%	42%
friday	55%	45%
saturday	40%	60%
sunday	35%	65%

*Travelers present at the station who do not use train services.
**Arrival or departure from the station by private transportation, public services (except train) or on foot.
Source: Vodafone for FS Research



Time in station

average time **29 min**

Analysis of the average waiting time of people arriving and departing from the station

Arrival	Departure			
	High speed	Regionale, Intercity	Islands	Other services**
High speed	82'	23'	20'	21'
Regional, Intercity	49'	36'	20'	21'
Islands	52'	33'	40'	30'
Other services**	46'	31'	29'	26'