

Station attendance

Napoli Centrale

Analysis of the presence of people in the station through the processing of Vodafone Analytics (non-personal telephone Big Data, anonymized and aggregated in absolute compliance with the privacy requirements of the GDPR).

Total
5,2 millions

82,8% Italians
17,2% Foreigners

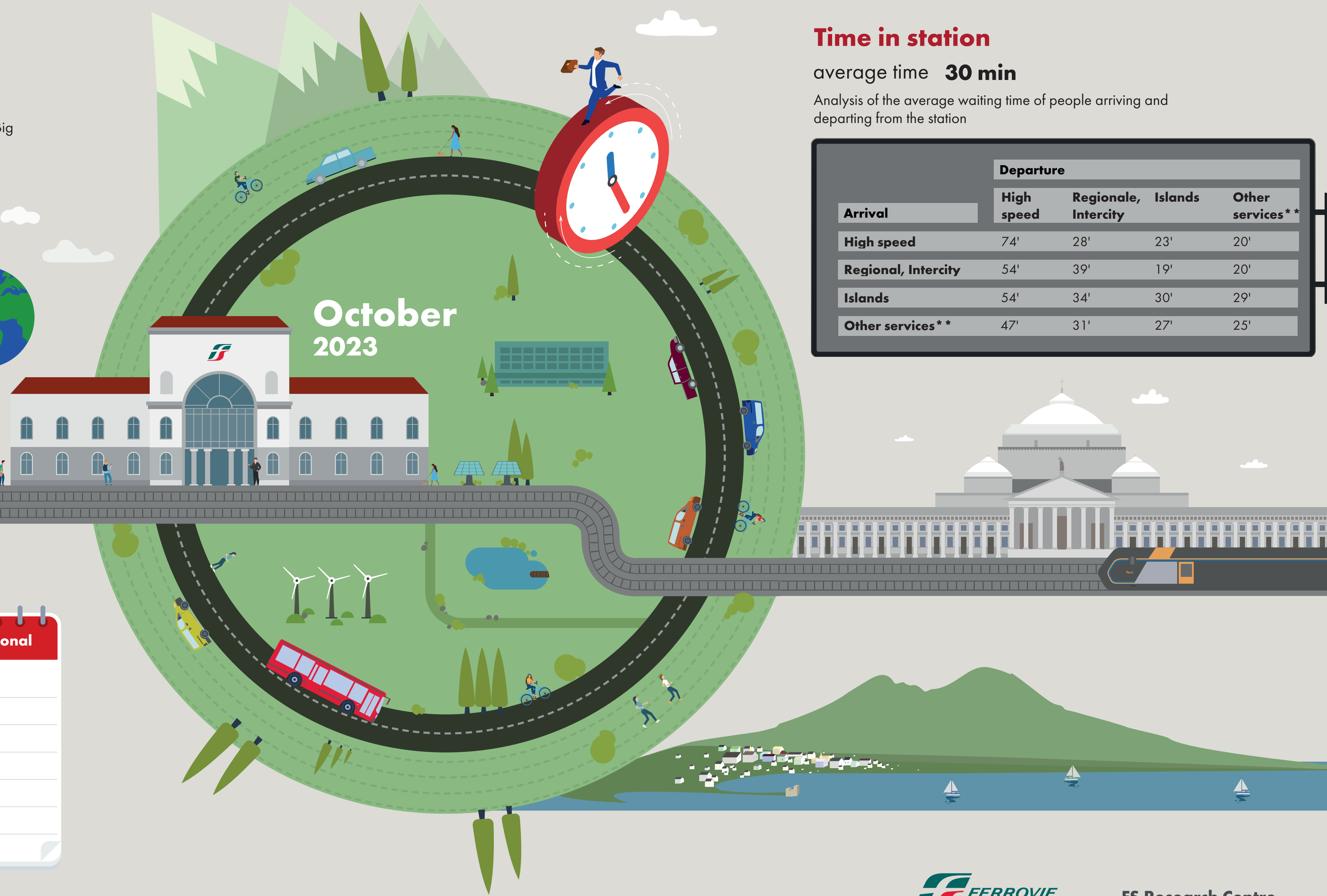
0,4 milioni
Number of visitors*
4,8 milioni
Passengers

Types of travelers

50% commuters **50%** occasional

	Commuters	Occasional
monday	55%	45%
tuesday	57%	43%
wednesday	58%	42%
thursday	57%	43%
friday	52%	48%
saturday	38%	62%
sunday	32%	68%

*Travelers present at the station who do not use train services.
**Arrival or departure from the station by private transportation, public services (except train) or on foot.
Source: Vodafone for FS Research



Time in station

average time **30 min**

Analysis of the average waiting time of people arriving and departing from the station

Arrival	Departure			
	High speed	Regionale, Intercity	Islands	Other services**
High speed	74'	28'	23'	20'
Regional, Intercity	54'	39'	19'	20'
Islands	54'	34'	30'	29'
Other services**	47'	31'	27'	25'