

Station attendance

Roma Termini

Analysis of the presences in the station through the processing of Vodafone Analytics (non-personal telephone Big Data, anonymized and aggregated in absolute compliance with the privacy requirements of the GDPR).

Total
9,6 millions

73,5% Italians
26,5% Foreigners

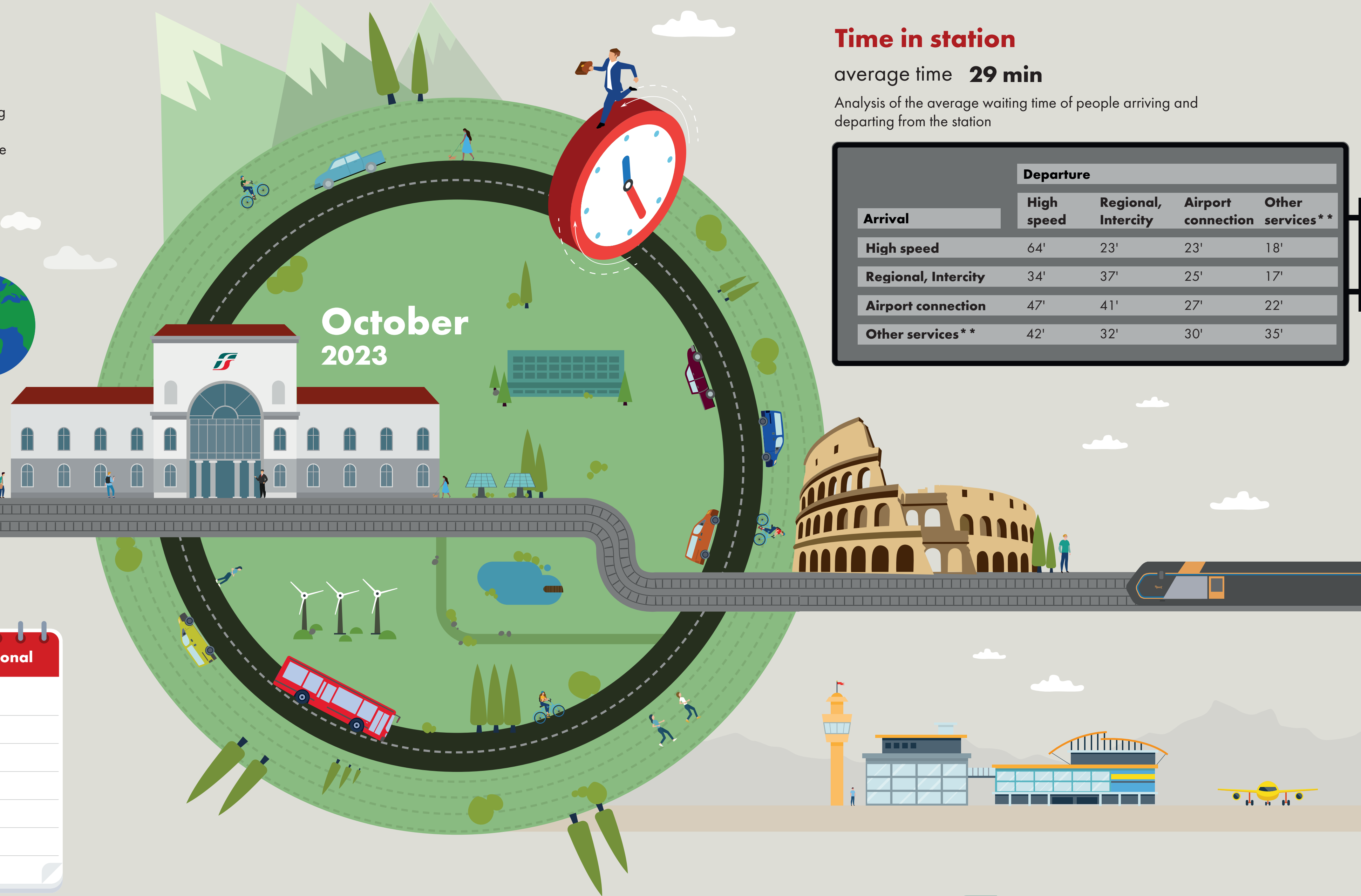
2,3 millions
Number of visitors*
7,3 millions
Passengers

Types of travelers

47% commuters **53%** occasional

	Commuters	Occasional
monday	53%	47%
tuesday	55%	45%
wednesday	54%	46%
thursday	52%	48%
friday	48%	52%
saturday	32%	68%
sunday	27%	73%

*Travelers present at the station who do not use train services.
**Arrival or departure from the station by private transportation, public services (except train) or on foot.
Source: Vodafone for FS Research



Time in station

average time **29 min**

Analysis of the average waiting time of people arriving and departing from the station

Arrival	Departure			
	High speed	Regional, Intercity	Airport connection	Other services**
High speed	64'	23'	23'	18'
Regional, Intercity	34'	37'	25'	17'
Airport connection	47'	41'	27'	22'
Other services**	42'	32'	30'	35'